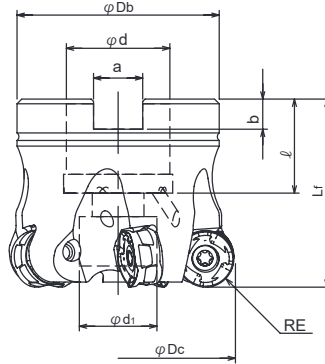
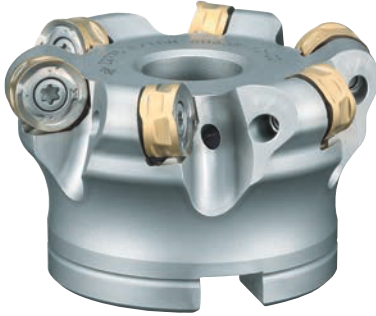
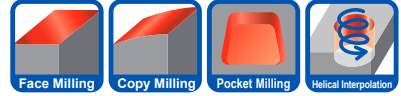


TDM EXTREME

EXTDM/MTX_{TYPE}

■ Facemill type



Cat. No.	Stock	No. of Tooth	Dimensions(mm)									Weight (kg)	Inserts
			φDc	RE	Lf	φDb	φd	φd1	a	b	ℓ		
EXTDM-5050R-12-22	●	5	50	6	40	43	22	17	10.4	6.3	20	0.29	RNMU1205MOE-**
EXTDM-5052R-12-22	●		52									0.30	
EXTDM-6063R-12-22	●	63	63									48	
EXTDM-6063R-12-27	●			50	58	27	20	12.4	7	22	0.56		

Note) All cutters are supplied without inserts or wrenches.

Clump screw	Recommended Torque (N · m)
TSW-410H	3.5

■ Parts

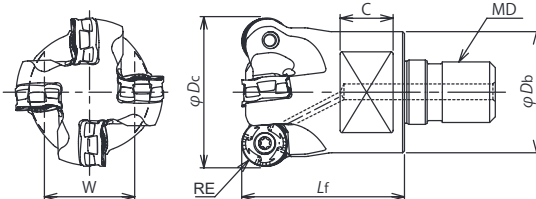
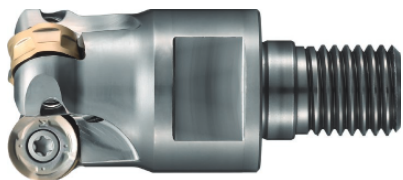
Clump screw	wrench
TSW-410H	A-15T

Recommended cutting conditions → page 5

TDM EXTREME

EXTDM/MTX_{TYPE}

■Modular Head type



Cat. No.	Stock	No. of Tooth	Dimensions(mm)							Inserts
			φDc	RE	Lf	φDb	MD	C	W	
MTX-3032-12-M16	●	3	32	6	43	28	M16	12	22	RNMU1205MOE-**
MTX-4040-12-M16	●	4	40			32	M16	14	26	

Note) All cutters are supplied without inserts or wrenches.

■Parts

Clump screw	wrench
TSW-410H	A-15T

Clump screw	Recommended Torque (N · m)
TSW-410H	3.5

Recommended cutting conditions → page 6

■Carbide shank arbor



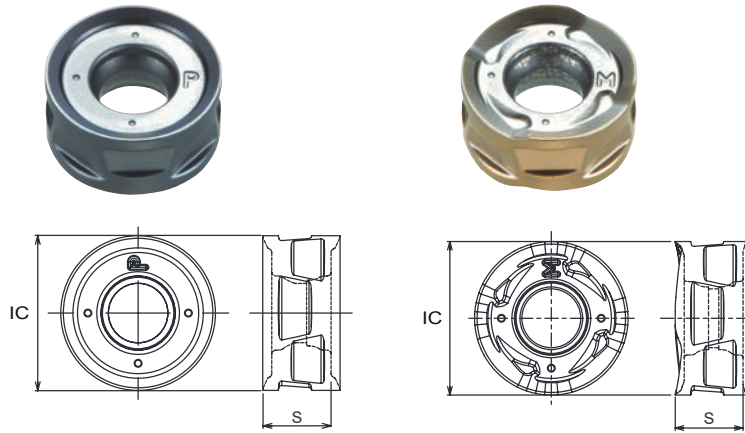
Scan here for product detail



TDM EXTREME

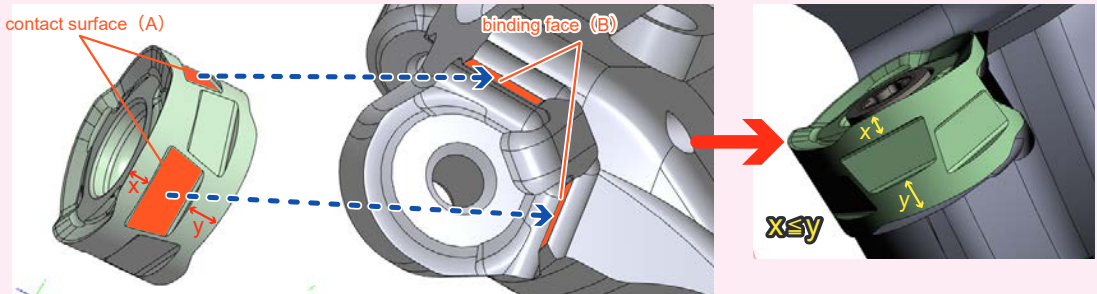
EXTDM/MTX_{TYPE}

■ INSERTS



Cat. No.	Tolerance	Total of corners (double-sided)	PVD coated				Dimensions(mm)	
			JC7518	JC7550	JC8050	JC8118	IC	S
RNMU1205MOE-MM	M	8	●	●			12	5.3
RNMU1205MOE-PM					●	●		

Attention to mounting insert



※Put insert so that contact surface of insert (A) can come into contact with wedge-shaped binding face(B).